

# Emergency Gas Shut-Off

Prepared by the Peninsulas Emergency Preparedness Committee of Washington 11/00 ([www.pep-c.org](http://www.pep-c.org))

To be fully prepared for an emergency, you should know how to shut off natural gas service to your home.

If an emergency occurs, and **IF YOU DO NOT SMELL OR HEAR ESCAPING GAS, THEN YOU PROBABLY DO NOT NEED TO SHUT OFF YOU GAS.** Doing so may deprive you of service unnecessarily.

However, **IF YOU ARE IN DOUBT OR IF YOU DO SMELL OR HEAR ESCAPING GAS,** then:

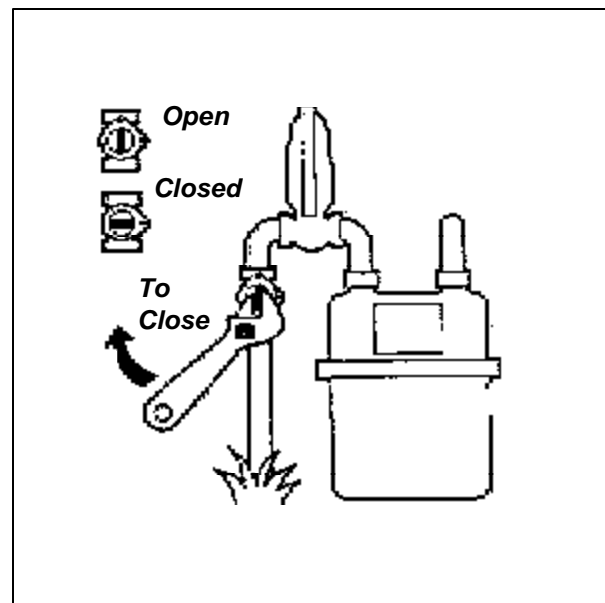
## DO NOT:

- Turn any electrical switches on or off.
- Smoke, use the telephone or take any other action that might create sparks.

## DO:

- Leave the house.
- At your discretion, turn off the gas meter, following the instructions to the right.
- Once the gas is off, **LEAVE IT OFF** until a qualified service representative can check out the system.
- Use a neighbor's phone to call the gas company.
- Before operating your furnace after an emergency, check to see that the venting system is intact and not clogged.

## HOW TO SHUT OFF A GAS METER



- Locate the meter shut-off valve (usually the first fitting) on the gas supply pipe coming out of the ground.
- Use a long handled wrench to turn the valve one-quarter turn so that the lever is cross-wise to the pipe (see diagram above).
- Once the gas is off, **LEAVE IT OFF** until a qualified service representative can check out the system.

Reprinted by permission of the Washington Natural Gas Company